



Panorama

Editors of PORSCHE PANORAMA

1955 to 1956: R. Gamble Mann

01/1957 to 11/1957: John R. Snyder

12/1957: William J. Sholar

01/1958 to 12/1960: Charles D. Beidler, Jr.

01/1961 to 12/1961: T. Kendall Twigg

01/1962 to 09/1969: Paul R. Heinmiller

10/1969: Emily Ross

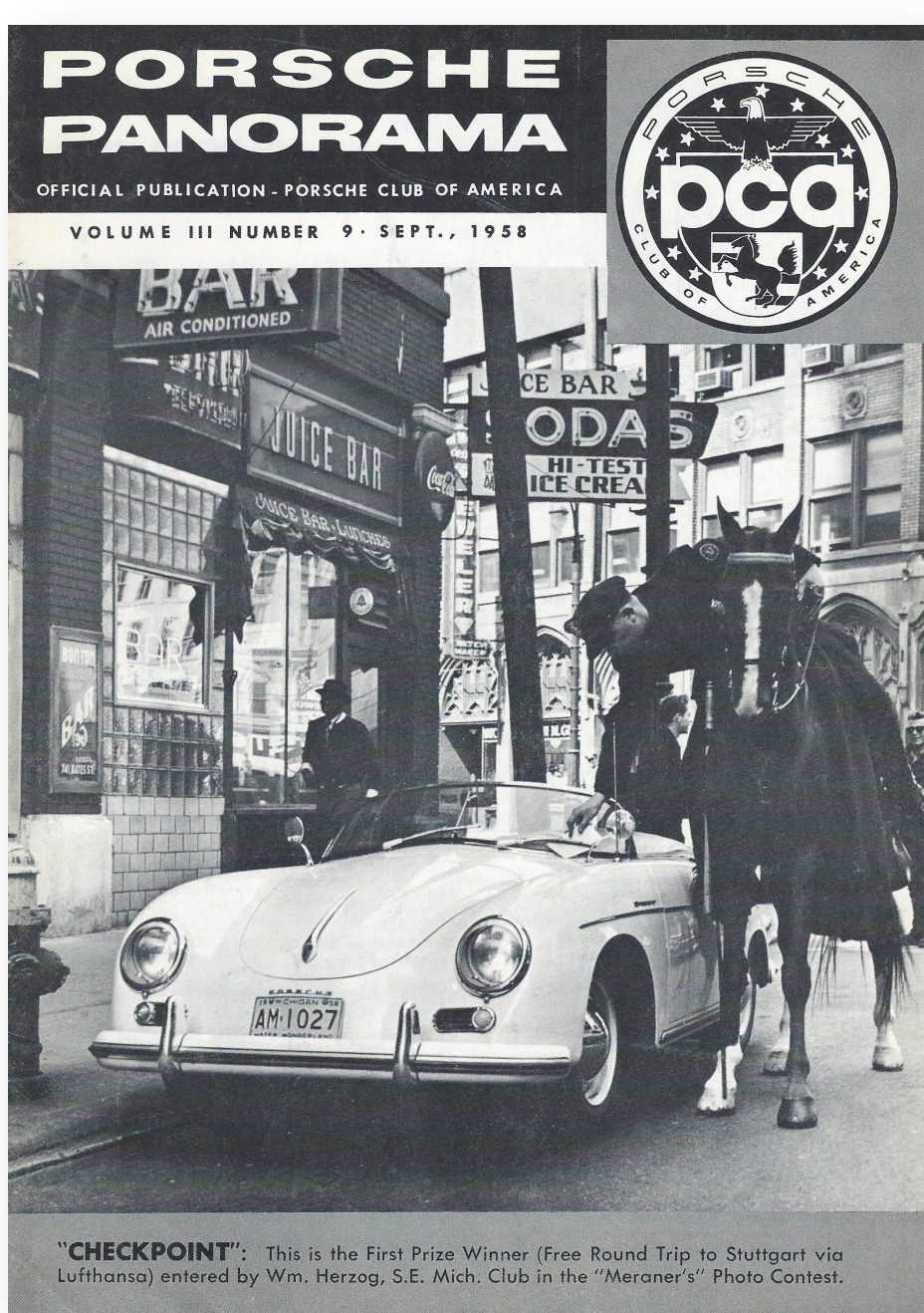
11/1969 to 12/2012: Betty Jo Turner

1/2013 to present: Pete Stout

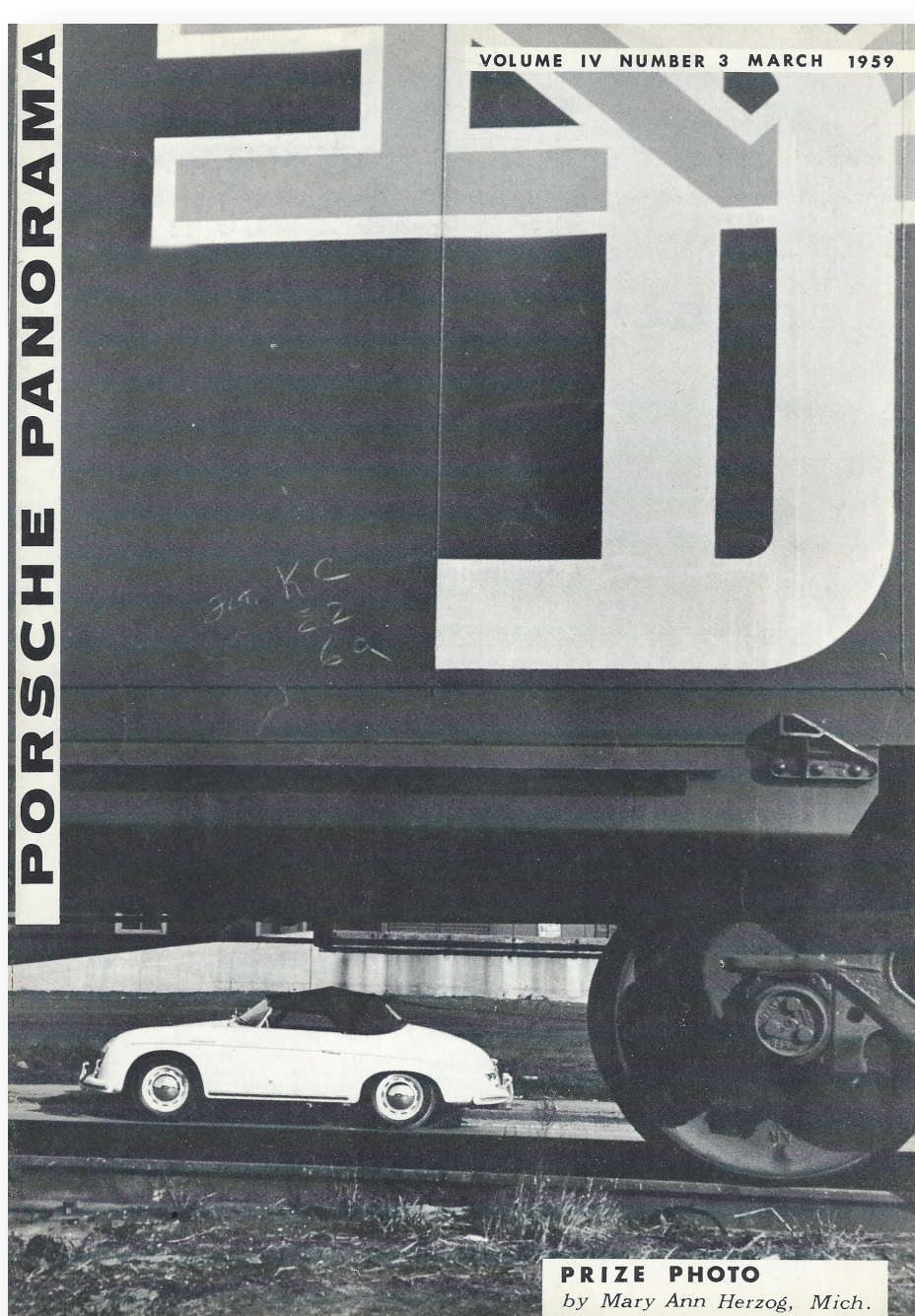
1955



1958



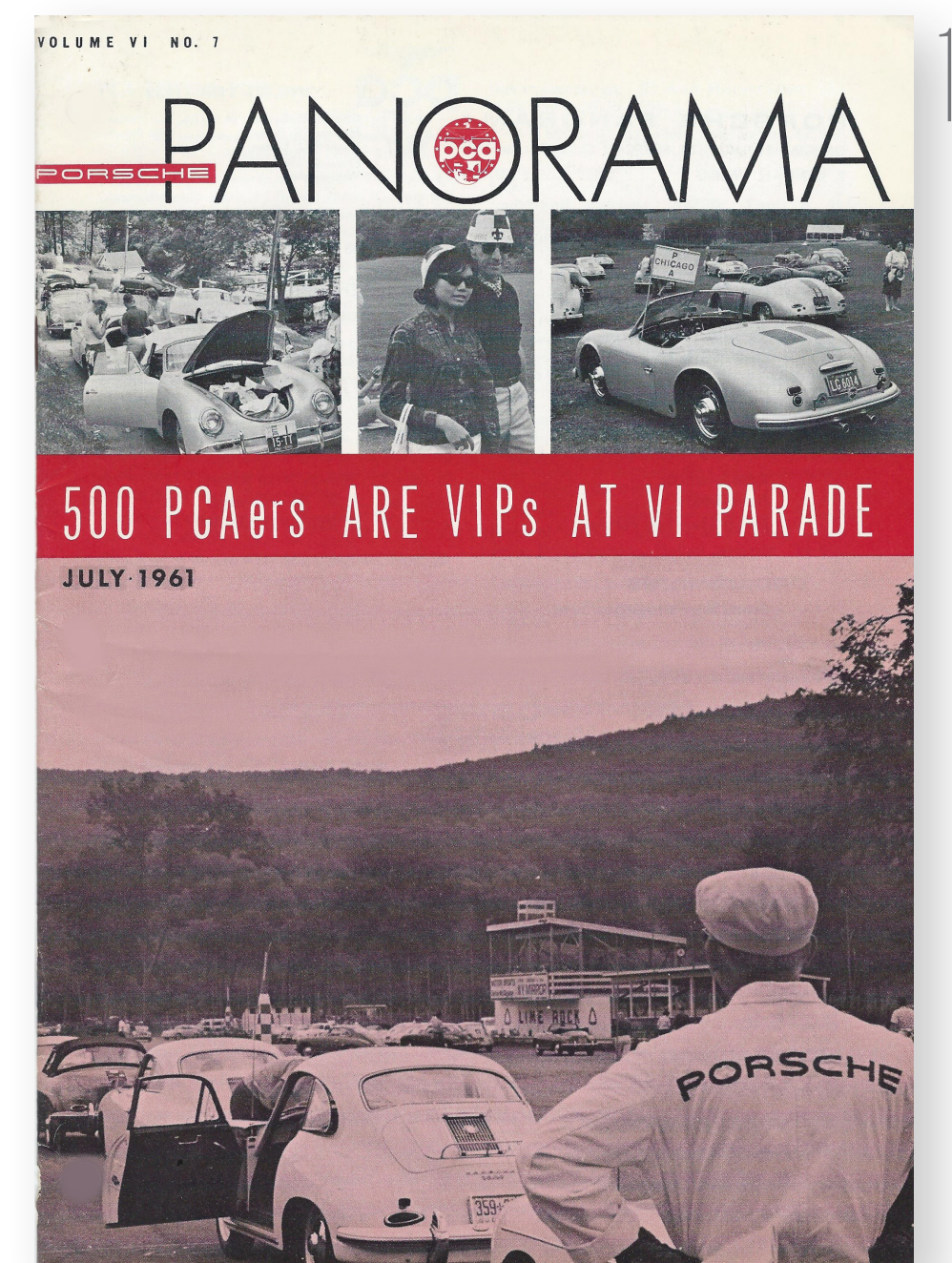
1959



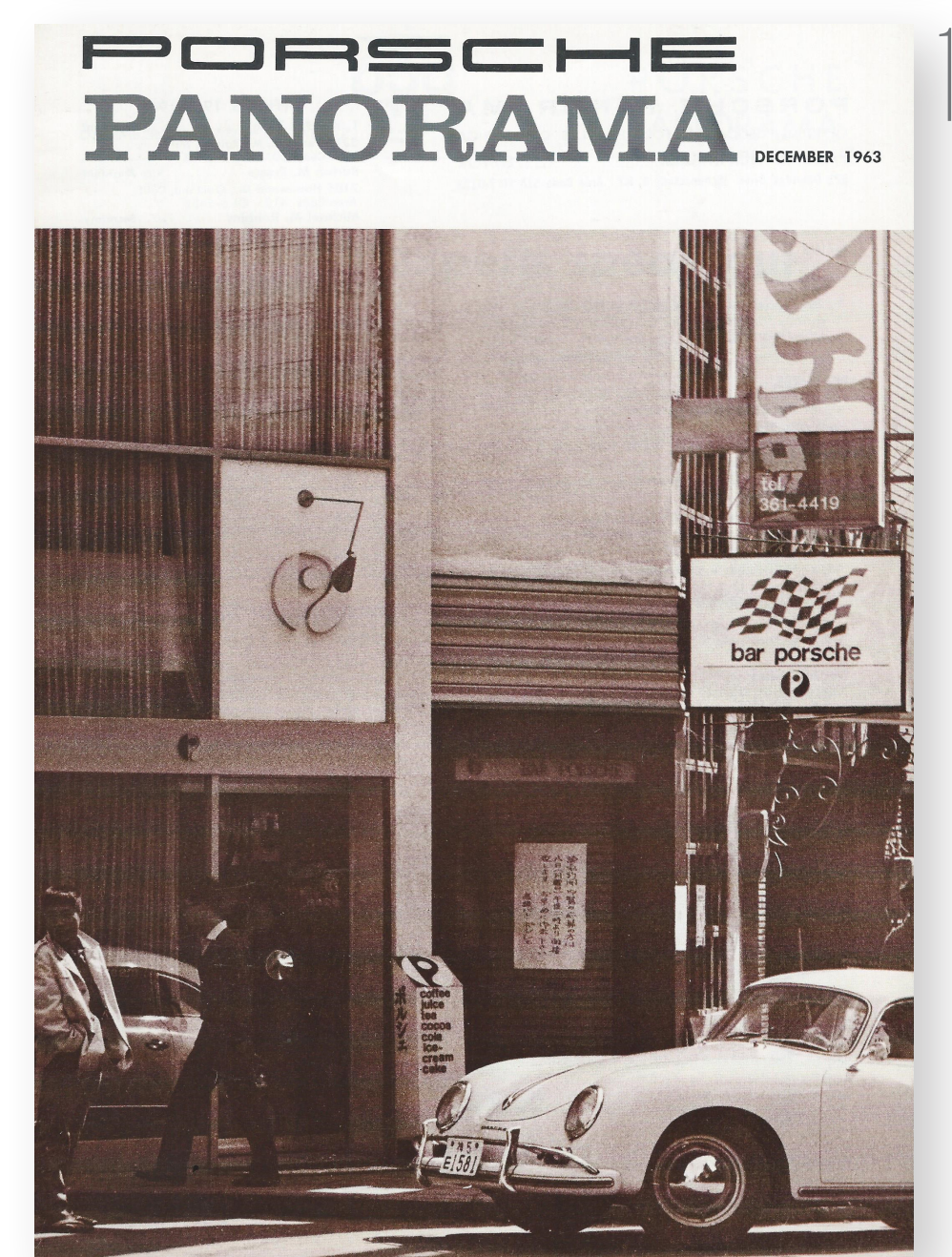
1960



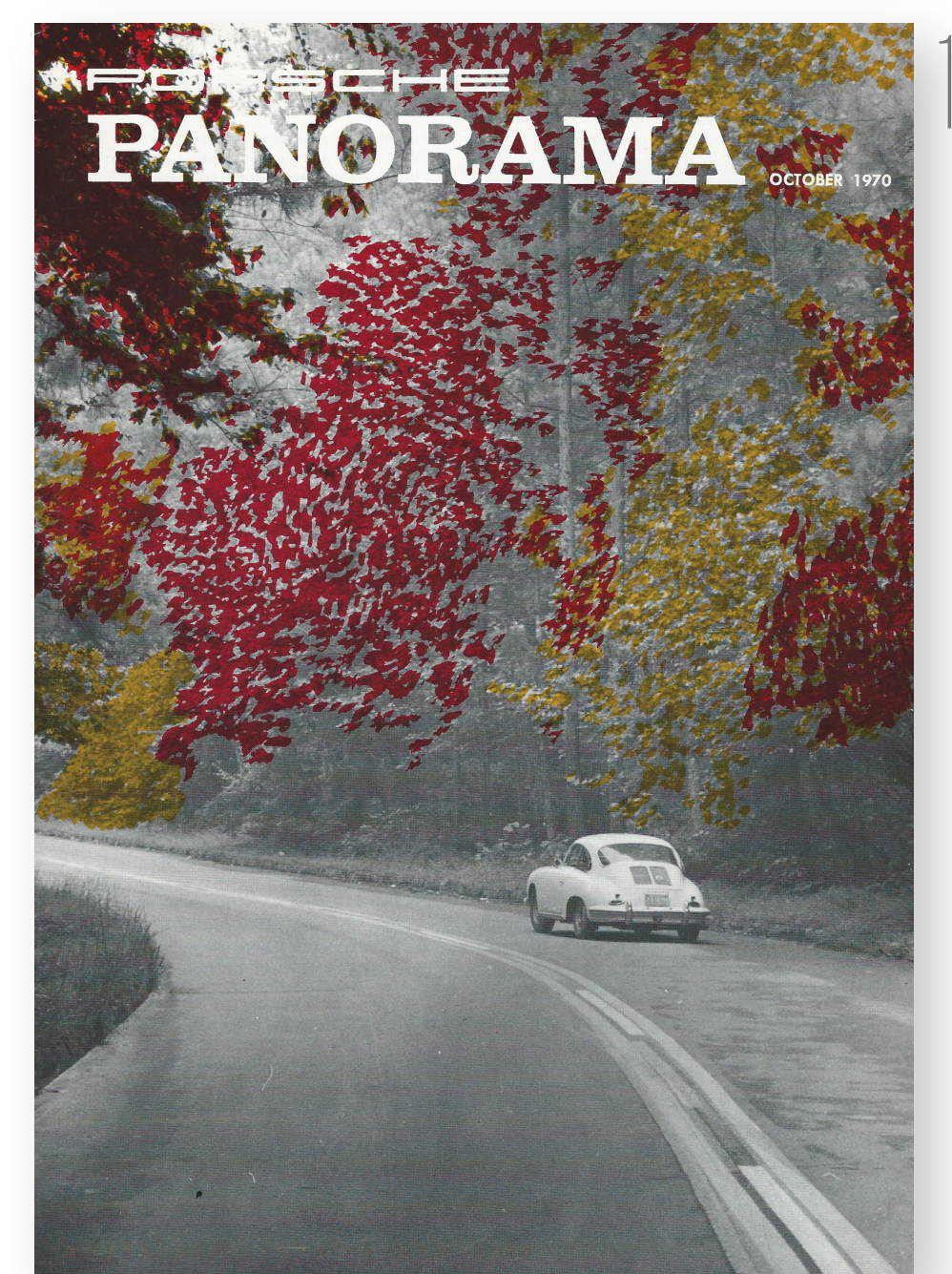
1961



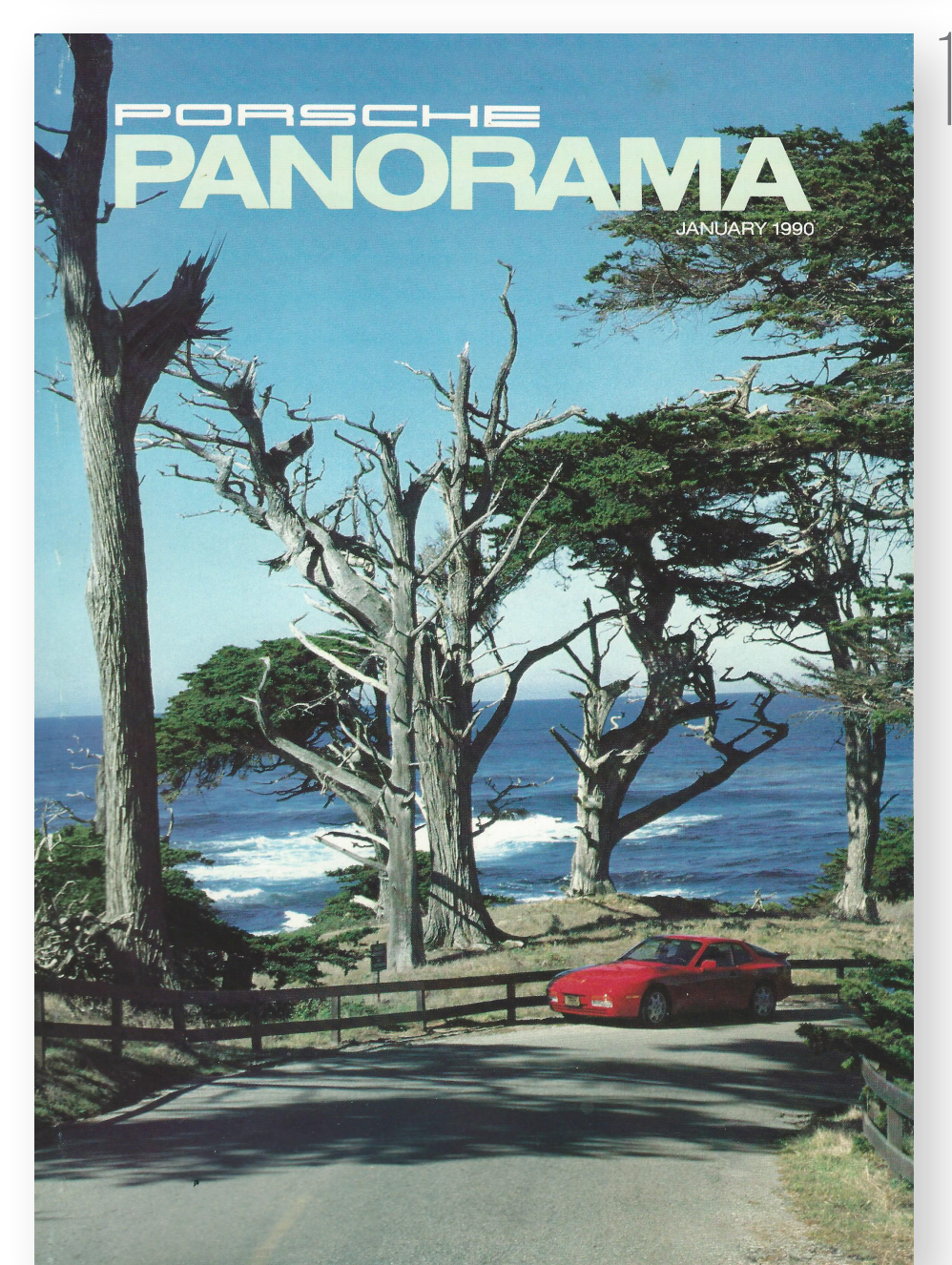
1963



1970



1990



2013

